

## GLC-9000



### FEATURES

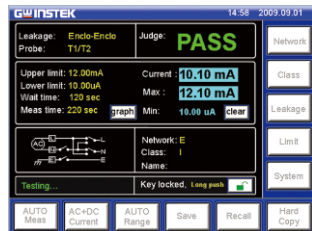
- Suitable for General Electrical of Leakage Current Measurement
- Touch Panel with Color LCD Display
- 9 Different Measurement Network to Simulate the Resistance of Human Body
- 50 Sets Preset Test Conditions Conform to the IEC 60990 ; 30 Sets Memories for Customer Defined
- 8 Different Types of Leakage Current
- Meter Function with SELV/CONV Function
- Upper & Lower Limitation for PASS/FAIL Judgment
- Various Leakage Current Measuring Mode : DC/AC/AC+DC/AC Peak
- Various Standard Interfaces : RS-232/ GPIB/USB Host & Device/EXT I/O



The GLC-9000, leakage current tester, is used to perform leakage current (or called touch current) tests on general purpose electric (IEC 60990) equipment. This tester engages with nine measurement networks (or called Measuring Device) to provide the simulation of human body whilst the EUT (equipment under test) is taking a leakage current testing, in compliance with the specific standards or regulations such as IEC, UL, JIS...etc..

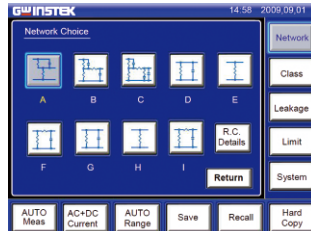
In order to provide a simple operation environment, the GLC-9000 equips large TFT LCD touch panel to configure system as well as to present the measurement settings information and result simultaneously. Besides, there are 50 preset testing conditions, which conform to IEC60990 and other standards, for general electric equipment can be recalled to reduce the setting time. In addition, 30 sets empty memory are available for user defined.

A Meter mode is also available for the GLC-9000, it uses the measurement terminal (T1/T2) to measure voltage as the same way of ordinary voltmeter. During the voltage measurement, the SELV function (safety extra low voltage) is applicable to detect the voltage value between measuring points whether exceeding the SELV setting.



#### Simple and Intuitive System

The color TFT touch screen makes operation intuitive and simple, whilst making it easier to observe test result.



#### Various Measurement Network

Nine Measurement Network are available for measuring the leakage current of electrical and medical equipment.



#### Various Standard Interfaces

The various practical interfaces are equipped as standard making control convenient and flexible.



Front



Rear Panel

### APPLICATIONS

- Production Testing
- Research & Design
- Quality Assurance Verification

GLC-9000



Mess- und Prüftechnik. Die Experten.

Ihr Ansprechpartner /  
Your Partner:

dataTec AG  
E-Mail: [info@datatec.eu](mailto:info@datatec.eu)  
[www.datatec.eu](http://www.datatec.eu)

**GW INSTEK**  
Simply Reliable

## SPECIFICATIONS

|                                | Ranges  | Range             | Resolution | Accuracy                         |                                   |
|--------------------------------|---|-------------------|------------|----------------------------------|-----------------------------------|
| <b>DC</b>                      | 25.00mA   | 5.00mA ~ 25.00mA  | 10µA       | ±(0.2%rdg+3dgt)                  |                                   |
|                                | 5.000mA   | 0.500mA ~ 5.000mA | 1µA        | ±(0.2%rdg+3dgt)                  |                                   |
|                                | 500.0µA   | 50.0µA ~ 500.0µA  | 0.1µA      | ±1.0%fs                          |                                   |
|                                | 50.00µA   | 4.00µA ~ 50.00µA  | 0.01µA     | ±1.0%fs                          |                                   |
| <b>AC or AC+DC</b>             | 25.00mA   | 5.00mA ~ 25.00mA  | 10µA       | 10Hz<f≤100kHz<br>±(2.0%rdg+6dgt) | 100kHz<f≤1MHz<br>±(2.0%rdg+10dgt) |
|                                | 5.000mA   | 0.500mA ~ 5.000mA | 1µA        | ±(2.0%rdg+6dgt)                  | ±(2.0%rdg+10dgt)                  |
|                                | 500.0µA   | 50.0µA ~ 500.0µA  | 0.1µA      | ±(2.0%rdg+6dgt)                  | ±(2.0%rdg+10dgt)                  |
|                                | 50.00µA   | 4.00µA ~ 50.00µA  | 0.01µA     | ±2.0%fs                          | ±2.0%fs                           |
| <b>AC PEAK</b>                 | 75.0mA  | 10.0mA ~ 25.0mA   | 100µA      | 20Hz<f≤1kHz<br>±(2.0%rdg+2dgt)   | 1kHz<f≤10kHz<br>±(5.0%rdg+10dgt)  |
|                                | 10.00mA   | 1.00mA ~ 10.00mA  | 10µA       | ±(2.0%rdg+2dgt)                  | ±(5.0%rdg+10dgt)                  |
|                                | 1.000mA   | 500µA ~ 1.000mA   | 1µA        | ±2.5%fs                          | ±5.0%fs                           |
|                                | 500.0µA   | 40.0µA ~ 500.0µA  | 0.1µA      | ±4.0%fs                          | ±5.0%fs                           |
| <b>EUT</b><br>(V/I CHECK)      | Voltage<br>300V   | 85V ~ 300V        | 0.1V       | ±(2%rdg+10dgt)                   |                                   |
|                                | Current<br>10A  | 0.5A ~ 10A        | 0.1A       | ±(2%rdg+5dgt)                    |                                   |
| <b>METER MODE</b>              | AC/DC   | 10.0 ~ 300.0V     | 0.1V       | ±(3%rdg+2V)                      |                                   |
|                                | AC+DC   | 10.0 ~ 300.0V     | 0.1V       | ±(3%rdg+2V)                      |                                   |
|                                | AC Peak   | 15.0 ~ 430.0V     | 0.1V       | ±(3%rdg+2V)                      |                                   |
| <b>INTERFACE</b>               | RS-232, GPIB, USB Host & Device, EXT I/O  |                   |            |                                  |                                   |
| <b>POWER SOURCE</b>            | For GLC-9000 : AC 100V/120V/220V/230V±10%, 50/60Hz<br>For EUT : AC 85V ~ 250V, 50/60Hz(264V Max.) |                   |            |                                  |                                   |
| <b>DIMENSIONS &amp; WEIGHT</b> | 330 (W) x 150 (H) x 350 (D) mm; Approx. 5kg   |                   |            |                                  |                                   |

Specifications subject to change without notice.

LC-9000GD2DH

## ORDERING INFORMATION

**GLC-9000** Leakage Current Tester

## ACCESSORIES

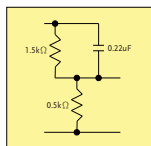
User manual x 1, Power cord x 2, Test lead(GTL-207) x 2, CD x1(Complete user manual), Alligator clips(GLC-01) x 4(Red x 2/Black x 2), Foil probe(GLC-02) x 1

## OPTIONAL ACCESSORIES

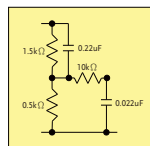
**GTL-232** RS-232C Cable  
**GTL-240** USB Cable, USB 2.0, A-B Type (L Type), 1200mm  
**GTL-246** USB Cable, USB 2.0 A-B TYPE CABLE, 4P  
**GTL-248** GPIB Cable (2.0m)

## MEASUREMENT NETWORK (MD)

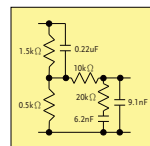
MD-A



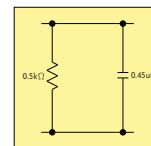
MD-B



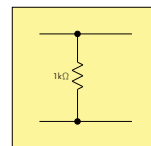
MD-C



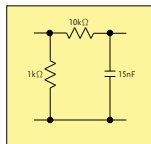
MD-D



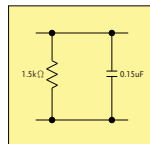
MD-E



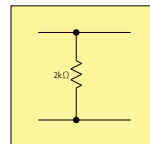
MD-F



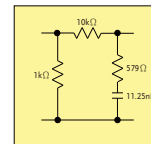
MD-G



MD-H



MD-I



Mess- und Prüftechnik. Die Experten.

Ihr Ansprechpartner /  
Your Partner:

dataTec AG  
E-Mail: [info@datatec.eu](mailto:info@datatec.eu)  
>>> [www.datatec.eu](http://www.datatec.eu)

**GW INSTEK**  
Simply Reliable



Website

Facebook

LinkedIn